



www.osee-dig.com
www.oseeamericas.com

XCM-250-OLED

Designed especially for post production and color grading applications; fully superior to CRT monitor.

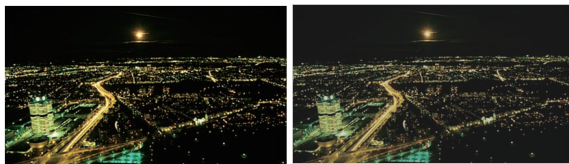
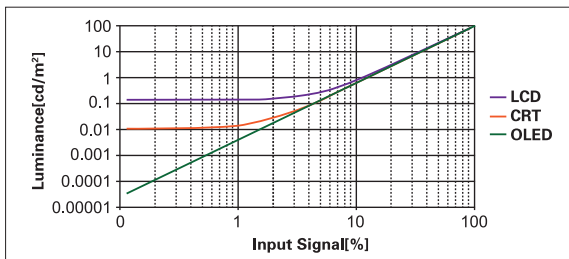


- ◆ *Superb Black Performance*
- ◆ *12-bit high-speed processing reduces IP delay and effects of spatial errors*
- ◆ *EBU Grade-1 Monitor Standard*

The XCM-250-OLED incorporates state of the art display technology that achieves richer black reproduction and eliminates any image retention artifacts. The display panel has industry standard 10-bit color depth with accuracy required for critical image evaluation.

Highlights

1. Superb Black Performance

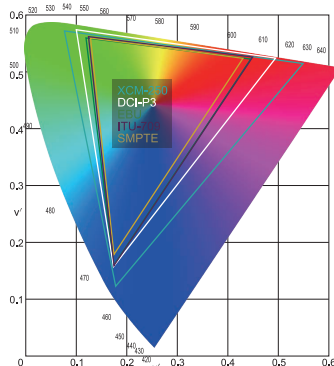


OLED

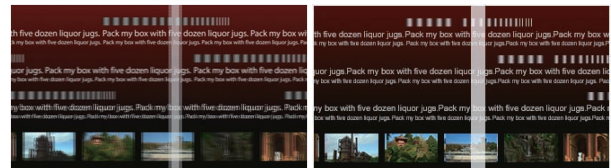
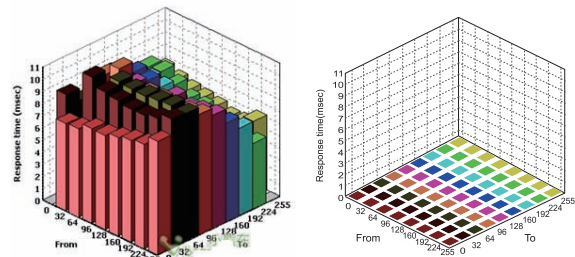
LCD

2. Wide Color Gamut

To meet the post-production requirement in digital film, XCM-250-OLED displays DCI-P3 and S-GAMUT accurately.



3. Fast Response Time



LCD

OLED

4. Interlace Display

Interlace images can be displayed as individual fields.

5. Wipe

It is often used to show the image comparison of before and after calibration.



after calibration

before calibration

XCM-250-OLED



6. Blending

It is applicable to the image keying in post-production.



7. Luma Zone



Specifications

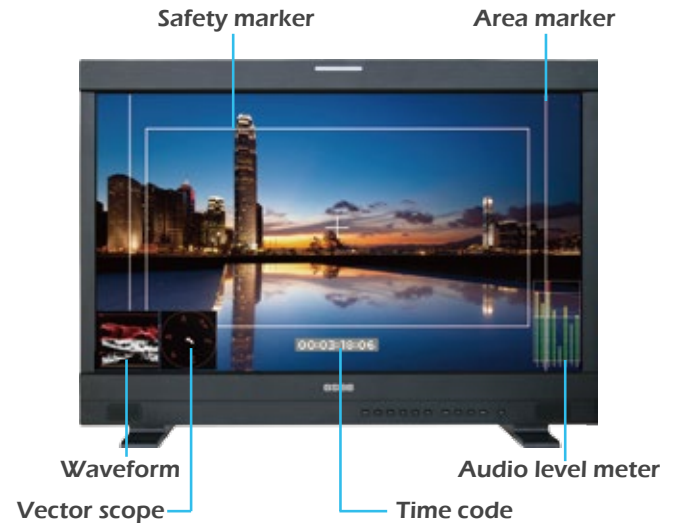
Panel	XCM-250-OLED
Size	24.5"
Resolution	1920×1080
Color Depth	10bit
Viewing Angle	178°×178°
Brightness	100cd/m ²
Contrast Ratio	5000:1
Input Terminals	
Composite	BNC (×1) , 1Vp-p +/-3dB sync negative
3G/HD/SD-SDI	BNC (×2) ,800mVp-p +/-10%
HDMI	HDMI Type-A, Compatible with DVI-D
YPbPr	BNC (×3) , Can be configured as composite or Y/C
Audio	2Ch Analog stereo, 5dBu, Impedance≥47K, RCA (×2 pair)
Output Terminals	
Composite	BNC (×1) , loop through, Automatic termination
3G/HD/SD-SDI	BNC (×2) , 800mVp-p +/-10%, Active loop through
YPbPr	BNC (×3) , loop through, Automatic termination , can be configured as composite or Y/C
Audio Monitor	1Ch Analog stereo, 5dBu, Impedance≤500Ω, RCA (×1 pair)
Earphone	Stereo mini jack (×1)
Speaker	5.0W+5.0W
External Control	
GPI	6 GPI Input, RJ45 (×1)
RS485	RS485, Can be cascade, RJ45 (×2)
Ethernet	10/100M Adaptive, RJ45 (×1)
General	
Power	DC 24V 6.76A
Operating Temperature	32°F to 95°F(0°C to 35°C) Recommended: 68°F to 86°F (20°C to 30°C)
Operating Humidity	20% to 80% no condensation
Dimensions (W×H×D) (with stand)	580×420.5×150 mm 22.83×16.56×5.91 inch
Dimensions (W×H×D) (without stand)	580×404×55.7mm 22.83×15.91×2.19 inch
Weight (with stand)	11Kg

Specifications are subject to change without notice.

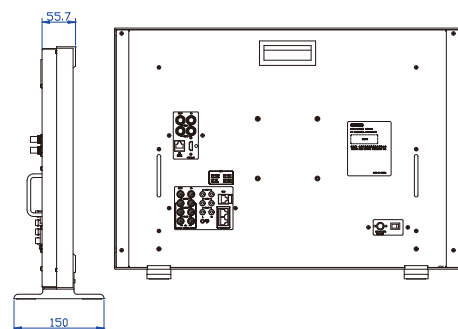
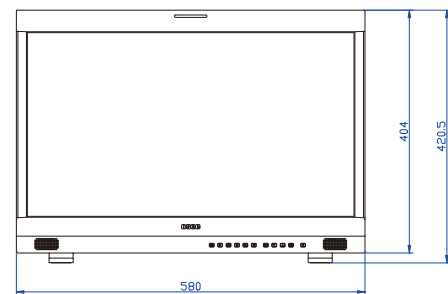
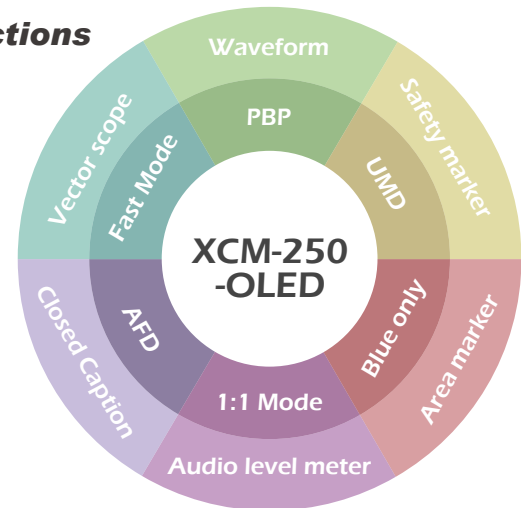
OSEE TECHNOLOGY CO., LTD.

Add: No.22 Building, No.68 Zone, Beiqing Road, Haidian District, Beijing 100094 China
TeI : +8610 6243 4168-8017 **Fax:** +8610 6243 4169
E-mail: sales@osee-dig.com

Status Display



Functions



OSEE AMERICAS LTD.

Add: 43218 Christy St Fremont, CA 94538
TeI : +1 510 996 4499 **E-mail:** info@oseeamerica.com
Toll Free: 866 625 6106 **Online Mall:** www.oseedirect.com